

For Students: Directions on How to Set Up and Use Kami

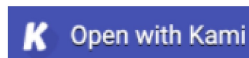
1. Install the Kami Chrome Extension in your Google Chrome Browser (kami.app/extension)

2. Click the Add to Chrome button, then Add Extension.



3. Go to Google Classroom, open your class, and go to Classwork.

4. Open your Assignment, and choose the file you wish to work on. You should now see a preview of the file; click Open with Kami to start completing your work in Kami.



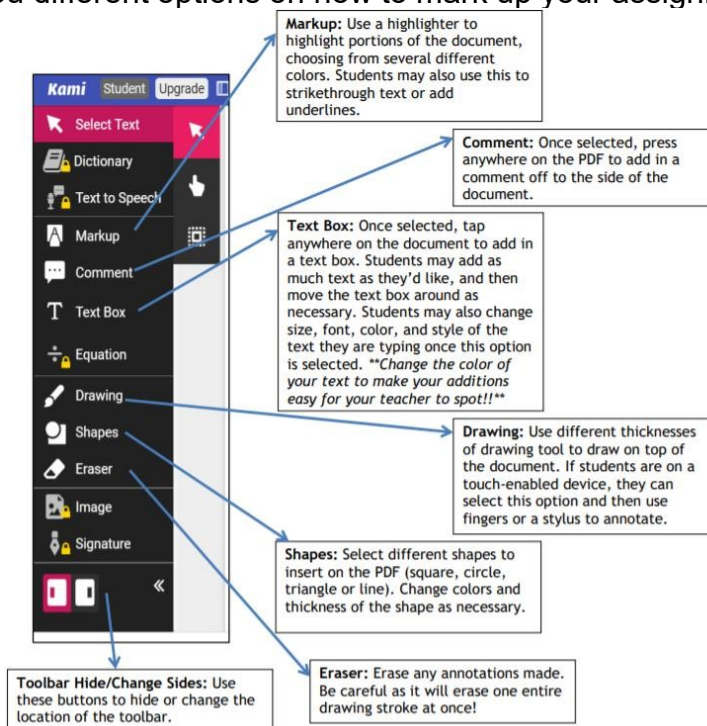
5. Sign in using your school's Google account using the Allow Google Drive button.



6. Select K12 School, then Student as your role, then Finish. Now, Kami is set up on your device.



7. Once you are in the document you will notice a toolbar on the left side of the screen that will allow you different options on how to mark up your assignment.



8. Once you're finished with your work, click the Turn in button. This will submit your work to your teacher. You've now completed and submitted your assignment

